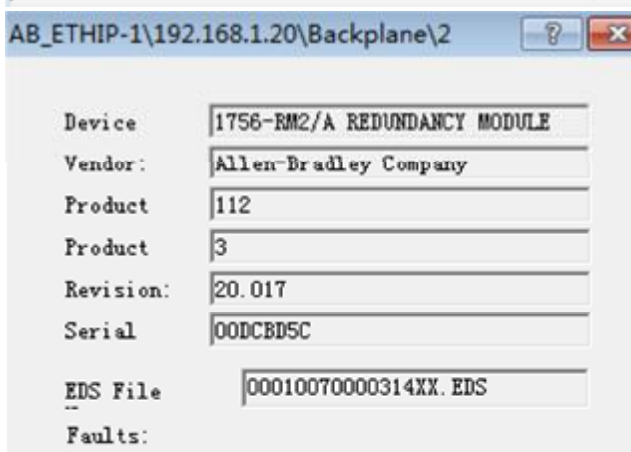
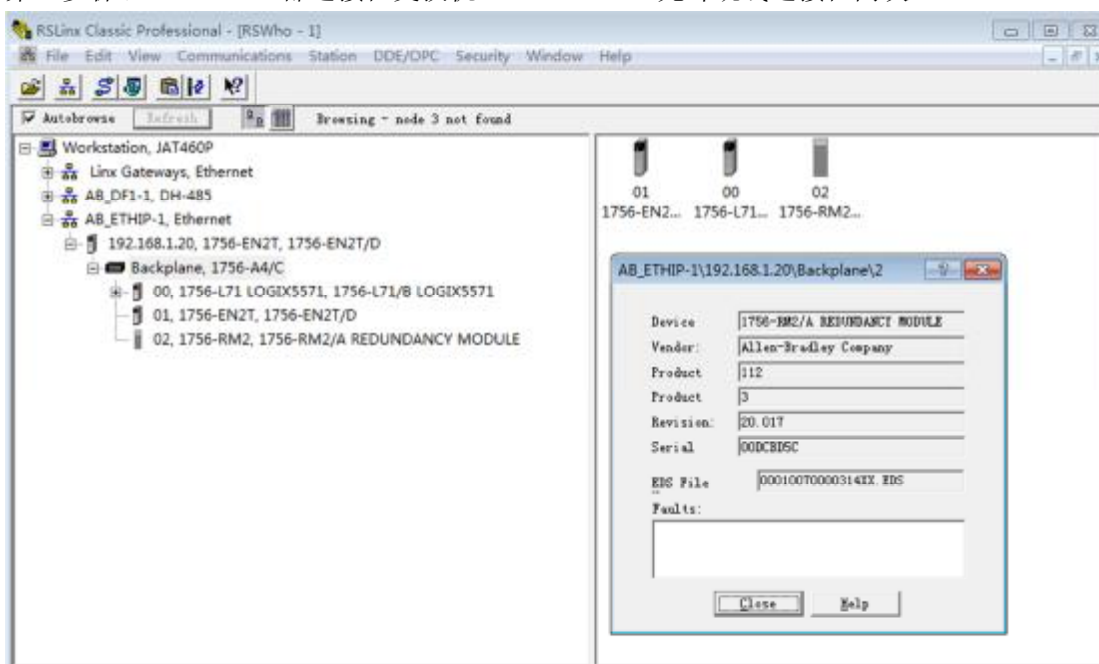


关于 ControlLogix 以太网 I/O 冗余配置步骤:



第一步保证 1756-EN2T 都连接在交换机上。1756-RMC1 光纤跳线连接在两块 1756-RM2 CH1 或 CH2 上。



1756-RM2/A Revision 20.017

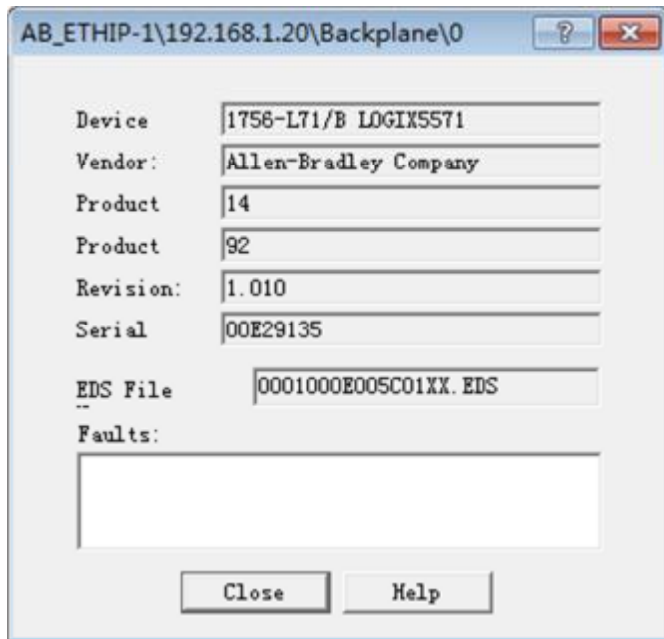
升级成冗余对应的版本: 20.009

AB_ETHIP-1\192.168.1.20\Backplane\2	AB_ETHIP-1\192.168.1.21\Backplane\2
Device: 1756-RM2/A REDUNDANCY MODULE	Device: 1756-RM2/A REDUNDANCY MODULE
Vendor: Allen-Bradley Company	Vendor: Allen-Bradley Company
Product: 112	Product: 112
Product: 3	Product: 3
Revision: 20.009	Revision: 20.009
Serial: 00DCBD5C	Serial: 00DCBC29
EDS File: 00010070000314XX.EDS	EDS File: 00010070000314XX.EDS
Faults:	Faults:

1756-EN2T /D VER 10.007

AB_ETHIP-1\192.168.1.20\Backplane\1 1756-EN2T/D Co...
General Port Configuration
Device: 1756-EN2T/D
Vendor: Allen-Bradley Company
Product: 12
Product: 166
Revision: 10.007
Serial: 00D8F7DC

AB_ETHIP-1\192.168.1.20\Backplane\1 1756-EN2T/D Co...
General Port Configuration
Network Configuration Type
<input checked="" type="radio"/> Static <input type="radio"/> Dynamic
<input type="radio"/> Use DHCP to obtain network configuration.
<input checked="" type="radio"/> Use BOOTP to obtain network configuration.
IP Address: 192 . 168 . 1 . 20
Network Mask: 255 . 255 . 255 . 0
Gateway: 0 . 0 . 0 . 0
Primary Name Server: 0 . 0 . 0 . 0
Secondary Name Server: 0 . 0 . 0 . 0
Domain Name:
Host Name:
<input checked="" type="checkbox"/> Auto-negotiate port speed and duplex
Current Port: 100
Current Duplex: Full duplex
(Changes to Port Speed and Duplex require module)
Status: Network Interface Configured



新拿到手的 1756-L71 初始版本是 1.010, 本次系统要使用冗余功能, 因此需要把当前版本升级到 20.058 版本。

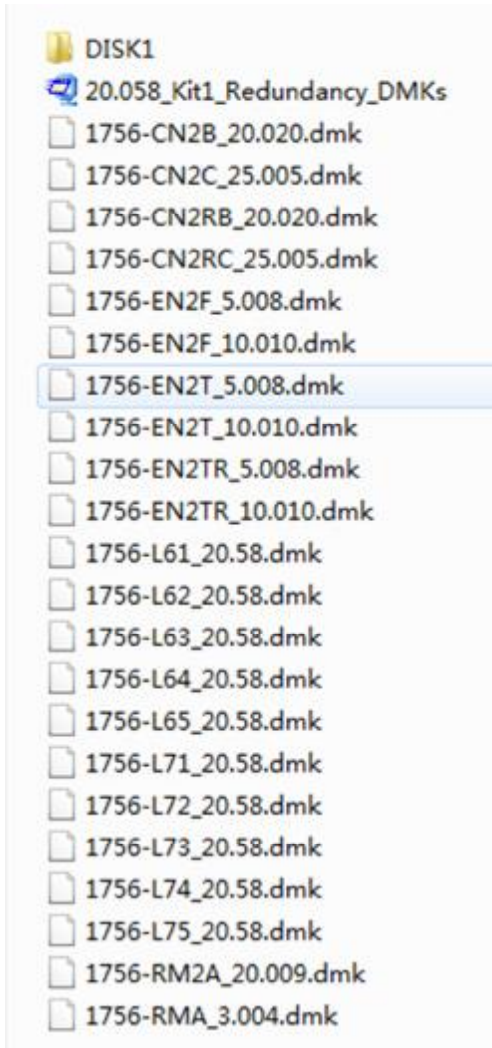
从 AB 官网上下载

Product: Firmware for 1756-Lxx Enhanced Redundancy Bundle v20.058_kit1
Version: 20.058

[↓ Fw Kit, V20.058_kit1, EnhCixRed Bundle.zip](#)

Description:
FileSize: 71.58 MB
Checksum: 5fe97faafc7155c2e43062003496dbfc
Comments:

解压后会看到许多*.dmk 文件, 这些就是新的模块升级版本



这时需要使用 ControlFlash 14.01 版本软件才能添加这些*.dmk 文件



添加成功后就可以正常刷机了!



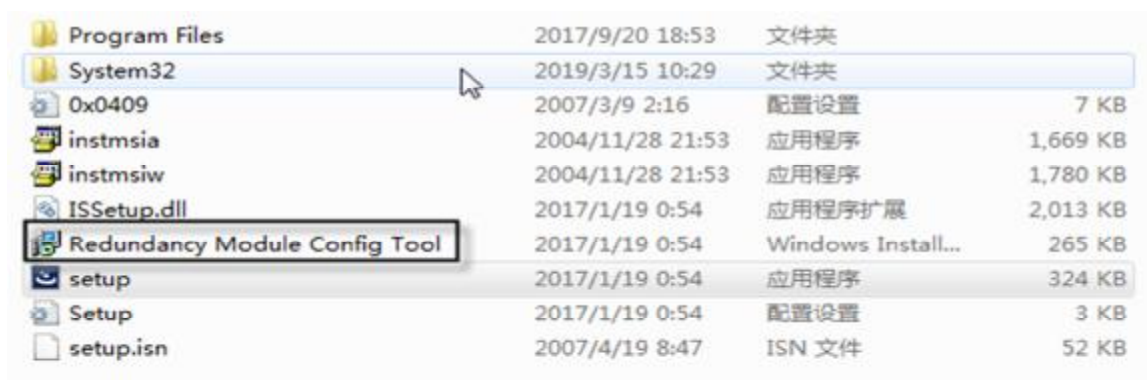
以下是 V20.058 冗余版本对应的模块版本号：

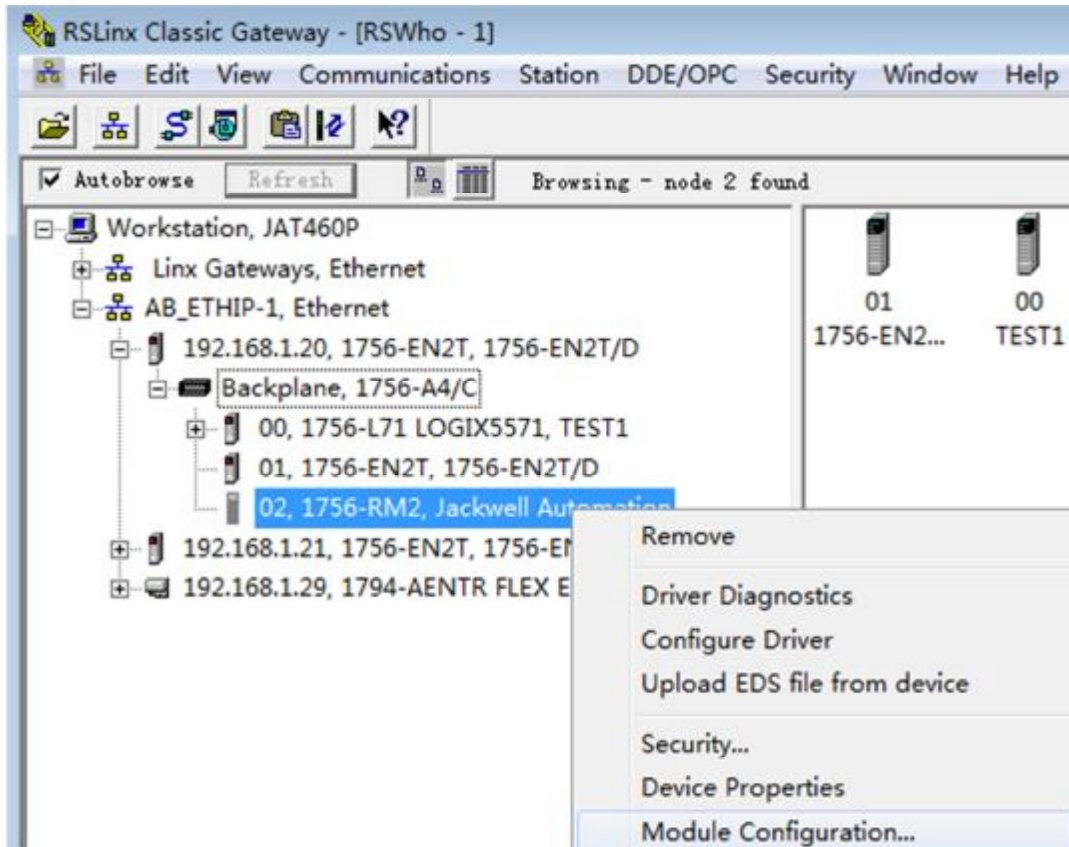
1756-EN2T	ControlLogix EtherNet/IP communication module	D C (or earlier)	10.010 ⁽²⁾⁽³⁾ 5.008 or 5.028 ⁽⁴⁾⁽⁵⁾
1756-L61	ControlLogix 5561 controller	Any	20.058
1756-L62	ControlLogix 5562 controller		
1756-L63	ControlLogix 5563 controller		
1756-L63XT	ControlLogix-XT controller		
1756-L64	ControlLogix 5564 controller		
1756-L65	ControlLogix 5565 controller		
1756-L71	ControlLogix 5571 controller		
1756-L72	ControlLogix 5572 controller		
1756-L73	ControlLogix 5573 controller		
1756-L73XT	ControlLogix-XT controller		
1756-L74	ControlLogix 5574 controller		
1756-L75	ControlLogix 5575 controller		
1756-RM2	ControlLogix redundancy module	Any	20.009

相应的软件版本如下：

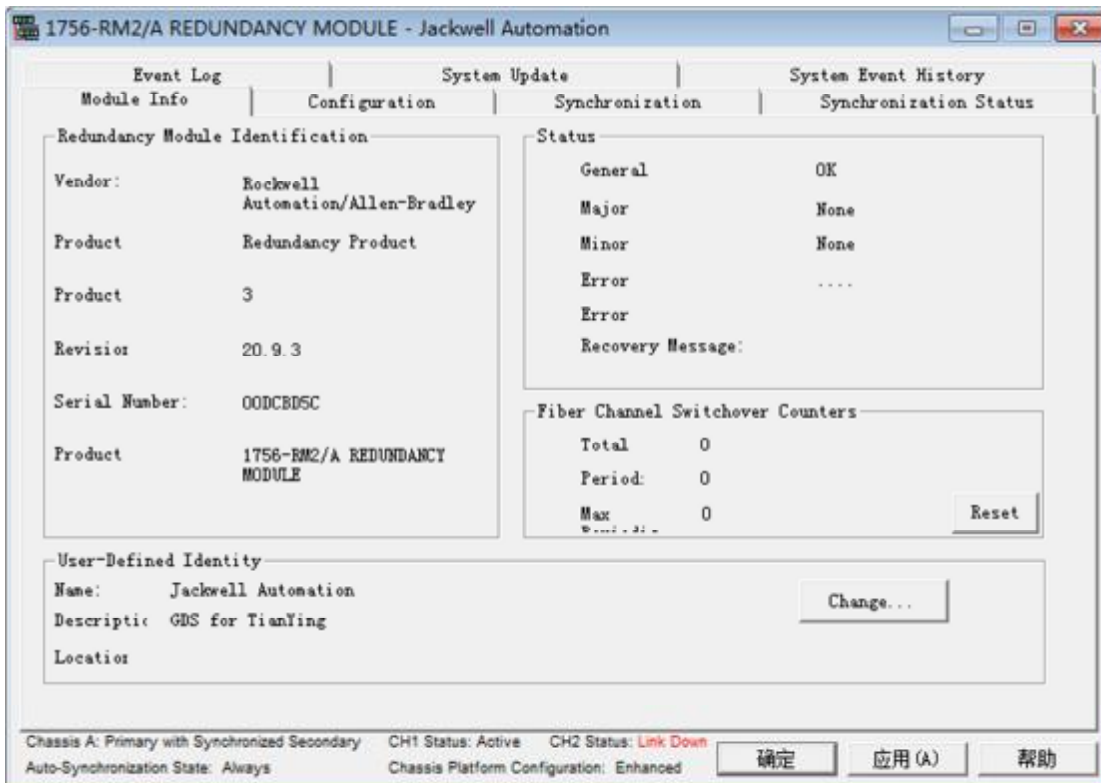
Software	Required Software Version, Min
CompareTool	6.10.00
ControlFLASH	14.01.00
FactoryTalk® Services Platform	2.90.00 (CPR 9, SR 9)
FactoryTalk Activation	4.00.02
FactoryTalk Alarms and Events	2.90.00 (CPR 9, SR 9)
FactoryTalk AssetCentre	6.10.00 (CPR 9 SR 7.4)
FactoryTalk Batch	12.01.00 ⁽¹⁾
FactoryTalk View Site Edition	9.00.00 (CPR 9, SR 4)
Redundancy Module Configuration Tool	8.04.01.00
RSLinx® Enterprise	5.90.00 (CPR 9, SR 5)
RSLinx Classic	3.90.00 (CPR 9, SR 9)
RSLogix 5000®	20.04.00 (CPR 9, SR 5)
RSNetWorx™ for ControlNet	26.00.00 (CPR 9, SR 9)
RSNetWorx for DeviceNet	

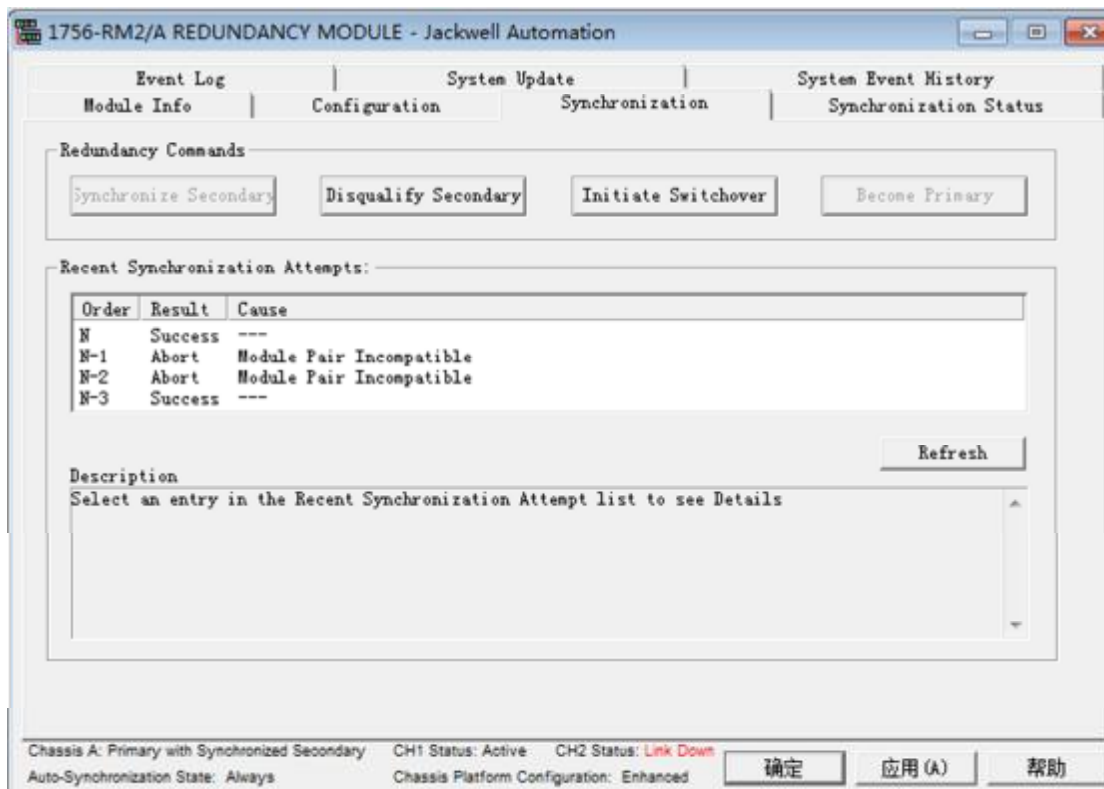
--> 把两套冗余的 1756 模块刷成同样的版本后，安装 **Redundancy Module Config Tool** 软件，安装完成后，右键点击 1756-RM2 模块，单击“Module Configuration”





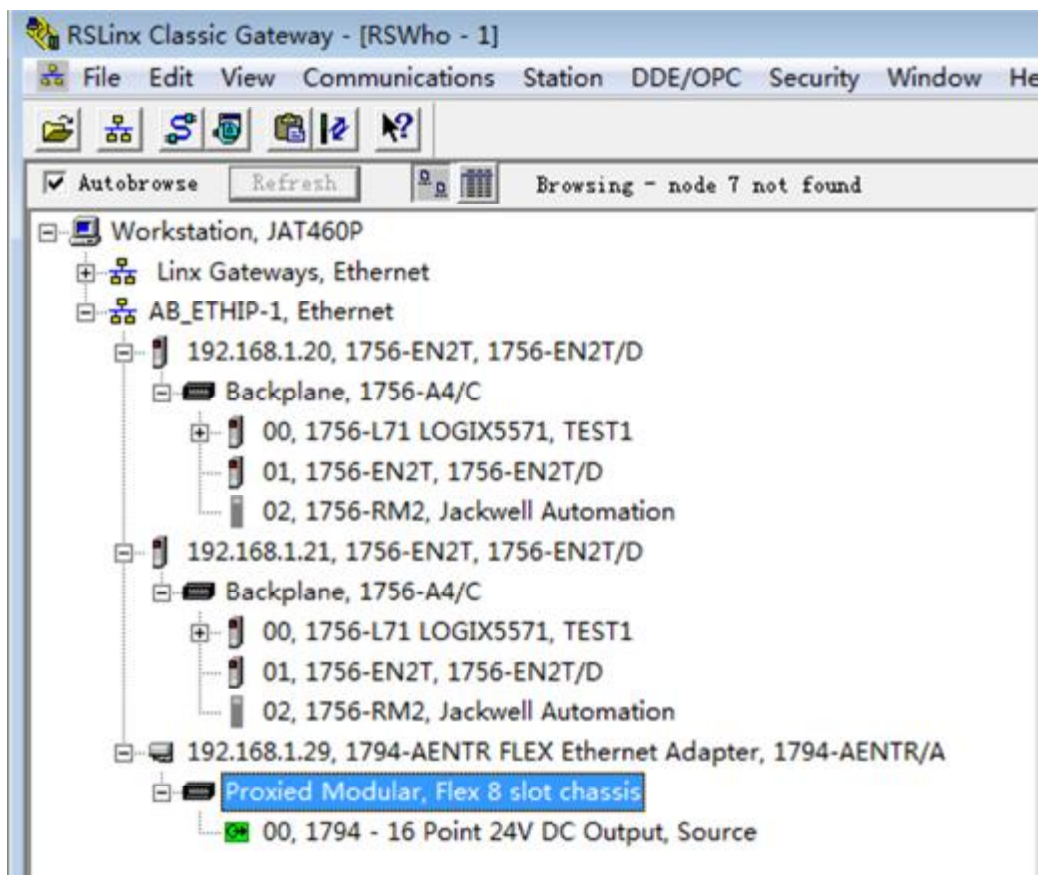
会弹出 RM2 冗余模块配置菜单：





单击“Synchronize Secondary”实现冗余配置。

这时观察两套冗余的控制系统的RM2模块，当一边出现“PRIM”另一边出现“SYNC”，表示冗余配置成功。





Copyright of Jackwell Automation
2017-10-16